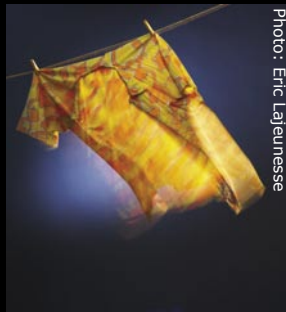
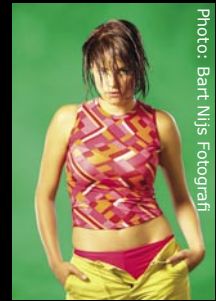
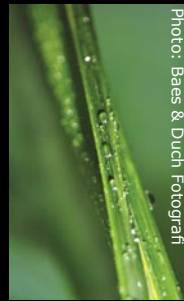


# C1 Software Comparison Chart



**CAPTURE ONE**  
Get More From Raw

**PHASE ONE**  
passion & profit

## GET MORE FROM RAW™

	MAC OS 10. 2.8 or later		Windows 2000/XP	
	C1 PRO 3.6	C1 LE 3.6	C1 PRO 3.6	C1 LE 3.6
<b>Image Quality Features</b>				
Phase One patent pending RAW conversion algorithms	√	√	√	√
Auto white balance algorithm	√	√	√	√
Individual R/G/B channels can be adjusted in the curves dialogue	√			
Midtone slider	√	√	√	√
Warmer and cooler color temperature slider	√	√	√	√
Saturation adjustment	√	√	√	√
Contrast adjustment	√	√	√	√
Individual noise reduction slider for each image	√			
Integrated noise reduction slider	√	√	√	√
16 bit output	√	√	√	√
Multiple tone response curves	√	√	√	√
Superior ICC profiles provided	√	√	√	√
3rd party camera ICC profiles accepted	√	√	√	√
Individual ICC camera profile for each image	√			
<b>Image Quality and Workflow</b>				
Phase One special sharpening algorithms	√	√	√	√
White balance color correction	√	√	√	√
Levels & curves adjustment	√	√	√	√
Over and under exposure compensation (+/- 2.5 EV)	√	√	√	√
User definable thresholds in auto exposure	√	√		
High / low exposure warnings with variable thresholds	√	√	√	√
Burn out warning in histograms			√	√
Ability to select custom target color settings	√			
Color editor selective ICC profiling color control	√		√	
Picker values on curves and histograms	√			
CMYK output	√		√	
Black & white preview option	√	√	√	√
Selective soft proof simulation	√		√	
Output interpolation (up and down resizing / scaling)	√		√	
Output down sampling (Quick Proof™)	√	√	√	√
Apply settings to any or all images	√	√	√	√
<b>Workflow</b>				
Number of differently formatted output files per conversion	Unlimited	1	3	1
Background batch conversions max queue size	Unlimited	20	Unlimited	20
Adjust images while batch processing in the background	√	√	√	√
Alignment grid	√			
Dual screen support with separate thumbnail browser	√			
Image stitching for Phase One digital backs	√		√	
Composition overlay with support for TIFF/JPEG	√			

## GET MORE FROM RAW™

	MAC OS 10. 2.8 or later		Windows 2000/XP	
	C1 PRO 3.6	C1 LE 3.6	C1 PRO 3.6	C1 LE 3.6
<b>Workflow (continued)</b>				
Real-time preview with thumbnails always reflecting conversion settings	✓	✓	✓	✓
Full page thumbnail browser	✓	✓	✓	✓
Fastest RAW conversion speed using Phase One QuickProof™ technology	✓	✓	✓	✓
Auto-renaming of output files (1, 2, 3, etc.)	✓	✓	✓	✓
Auto exposure adjustment	✓	✓	✓	✓
Rotation (+/- 90 degrees)	✓	✓	✓	✓
Arbitrary rotation	✓		✓	
Portrait or landscape screen orientation	✓	✓	✓	✓
Custom Crop both fixed aspect ratios and unconstrained	✓	✓	✓	✓
MetaData	✓	✓	✓	✓
Add text notes (annotations) to RAW files - includes search facility			✓	✓
CF card importer	✓	✓	✓	✓
Preview zoom and fit within window	✓	✓	✓	✓
Auto-save			✓	✓
Keyboard shortcuts	✓	✓	✓	✓
Embed watermark of an image into the output file	✓			
Add copyright text into output image file (watermark)	✓			
Before and after for previewing changes	✓			
Create HTML index / Export image index	✓		✓	
Simple tagging & sorting of images	✓	✓	✓	✓
Advanced tagging & sorting of images (1-9 +?-) )	✓			
User customizable toolbar	✓			
Full session folder support	✓		✓	✓
Single session folder support		✓		
Dual image view to compare 2 images (4 Mac/Pro)	✓	✓	✓	✓
JPEG browsing	✓	✓	✓	✓
TIFF browsing	✓	✓		
4 channel histogram display	✓	✓	✓	✓
A complete color managed workflow	✓	✓	✓	✓
Focus display at 100%	✓	✓	✓	✓
IIQ Raw for Phase One camera backs support	✓		✓	
Composition mode when shooting tethered	✓		✓	
Selectable file extensions for conversions			✓	✓
Anti-moire plugin for Photoshop	✓		✓	
Auto open output in Photoshop or other editor	✓	✓	✓	✓
Archive and restore conversion settings			✓	✓
Auto preview cache management for a faster workflow			✓	✓
Automatic on-line software updates	✓	✓	✓	✓

## Camera Support

C1 PRO and C1 DB: Phase One: P 25/ P 20/ H 25/ H 20/ H 10/ H 101/ H 5/ LightPhase

C1 PRO and C1 LE: Canon: 1Ds/ 1D/ 1Ds/ MKII/ 1D MKII/ 20D/ 10D/ D60/ D30/ 300D/ Pro 1/ G5/ G3/G2  
Nikon: D1X/ D1H/ D2H/ D100/ D70  
Olympus: E1/ E10/ E20/ C 8080  
Pentax: \*istD  
Fuji: S2/ S3  
Konica Minolta: Maxxum 7D/ Dynax 7D/ Alfa 7/ A1/ A2

## Language Support

All C1 Software: English, French, German, Czech, Italian, Spanish, Japanese, Chinese (simplified)

## Free Software Update

C1 PRO: 2 free updates included in purchase

C1 DB: Free for Phase One digital back customers

C1 LE: 1 free update included in purchase

## Free Trial Period (no restrictions)

C1 PRO: 30 days

C1 LE: 15 days

## Technical Support

Phase One offers a web based Support System at: <http://support.phaseone.com>  
The different types of support you can find on the above link are listed below.

Getting started

Tutorial

Knowledge base

Forum

Create a support case

Integrated help file

If you purchased C1 PRO or C1 DB from a dealer you are entitled to dealer support

**Note:** C1 DB Software has the same features as C1 PRO but does not support DSLR cameras

### Phase One A/S

Roskildevej 39  
DK-2000 Frederiksberg  
Denmark  
[www.phaseone.com](http://www.phaseone.com)

### Phase One US

200 Broadhollow Road  
(Suite 302)  
Melville, NY 11747  
USA  
[www.phaseone.com](http://www.phaseone.com)

### Phase One Asia

117 Nong, No 16/ 1802  
Yong Shu Pu Lu  
Yong Su District  
Shanghai, 2000282  
China  
[www.phaseone.com](http://www.phaseone.com)

### Phase One Germany

Lichstrasse 43H  
50825 Köln  
Germany  
[www.phaseone.com](http://www.phaseone.com)